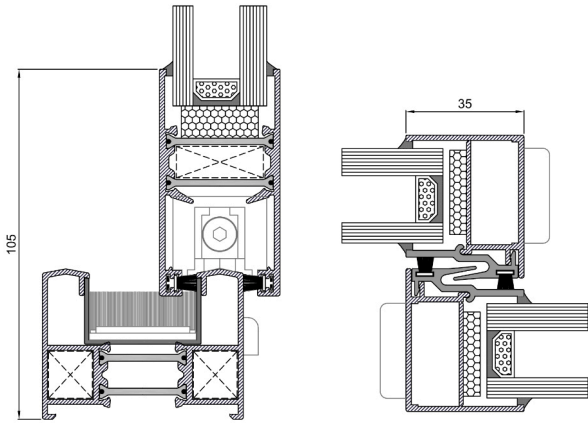


XS-60



The XS-60 system has been designed to provide a minimalist and functional solution for building projects. Its central node of only 35 mm and its 60 mm section make it an optimal solution both for new construction and for the refurbishment of old buildings.



Technical data

Geometry and glazing

2-rail frame	60/90/100 mm
3-rail frame	106/146 mm
Sash	36 mm
Thickness	1,5 mm
Polyamide frame	26 mm
Polyamide sash	32 mm
Sash glazing thickness	26-30 mm

Maximum dimensions and weights*

Width	2.600 mm
High	2.400 mm
In-line hardware	150 Kg/hoja

*Consult maximum dimensions and weight according to typology.

Categories achieved at test centre :

Protection against atmospheric agents | Conducted by a notified institution

Reference test: window with 2 sliding sashes 1230x1480 mm, 6-18-6 glass

Air permeability

Test according to UNE-EN 1026:2017
Classification according to UNE-EN 12207:2017



Water tightness

Test according to UNE-EN 1027:2017
Classification according to UNE-EN 12208:2000



Wind resistance

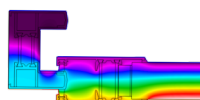
Test according to UNE-EN 12211:2017
Classification according to UNE-EN 12210:2017



Thermal transmittance | Energy efficiency:

$U_f = 3,7 \text{ W/m}^2\text{K}$

$U_w \geq 1,6 \text{ W/m}^2\text{K} *$



* Calculated value according to Norma UNE-EN ISO 10077-2:2020 UNE-EN ISO 10077-1:2017 for 2 balcony sash window measuring 2600x2400 mm with triple low emissivity glass. $U_g 1,0 \text{ W/m}^2\text{K}$.

Window acoustic insulation:

$R_w (C;Ctr):$

$34 (-1;-3) *$

* Calculated value for a 2 sash window measuring 1230x1480 mm with glass 44 (-1;-5), consult Extrugasa for other types of glass or dimensions.

