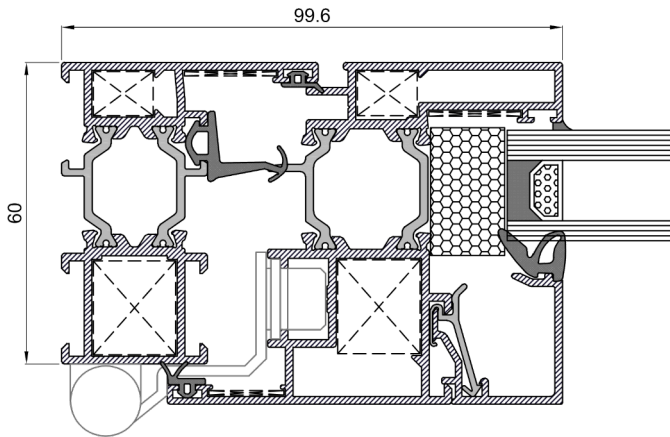


XP-60+



The XP-60+ system, with 60 mm of section, standard 16 groove hardware and 24 mm thermal break, which with its double bracket allows all window and door enclosures to be made with the greatest guarantees.



Technical data

Geometry and glazing

Frame	60 mm
Sash	68 mm
Thickness	1,5 mm
Polyamide frame and sash	24 mm
Maximum glass thickness	46 mm
Minimum glass thickness	6 mm

Maximum dimensions and weights*

Width	1.600 mm
High	2.600 mm
Visible hardware	100 kg/hoja
Concealed hardware	130 kg/hoja

*Consult maximum dimensions and weight according to typology.

Categories achieved at test centre :

Protection against atmospheric agents | Conducted by a notified institution

Reference test: window with 2 tilt-and-turn sashes 1230x1480 mm, 6-18-6 glass

Air permeability

Test according to UNE-EN 1026:2017
Classification according to UNE-EN 12207:2017



Water tightness

Test according to UNE-EN 1027:2017
Classification according to UNE-EN 12208:2000



E = special category *
1500= pressure at which the window works

Wind resistance

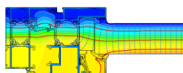
Test according to UNE-EN 12211:2017
Classification according to UNE-EN 12210:2017



Thermal transmittance | Energy efficiency:

$U_f = 2,4 \text{ W/m}^2\text{K}$

$U_w \geq 1,2 \text{ W/m}^2\text{K}^*$



Window acoustic insulation:

$R_w (C;Ctr):$

47 (-1;-4)*

* Calculated value according to UNE-EN ISO 10077-2:2020 UNE-EN ISO 10077-1:2017 for 2 balcony sash window measuring 1480x2200 mm with triple low emissivity glass. Ug 0,5 W/m²K.

* Calculated value for a 2 sash window measuring 1230x1480 mm with glass 48 (-1;-5), consult Extrugasa for other types of glass or dimensions.

