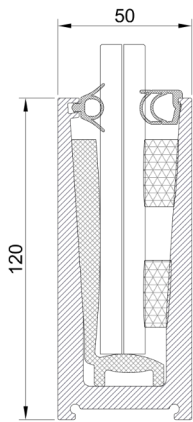
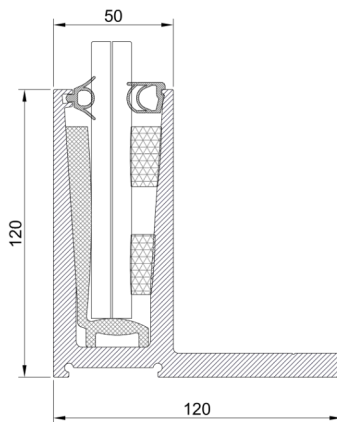


XR- GLASS

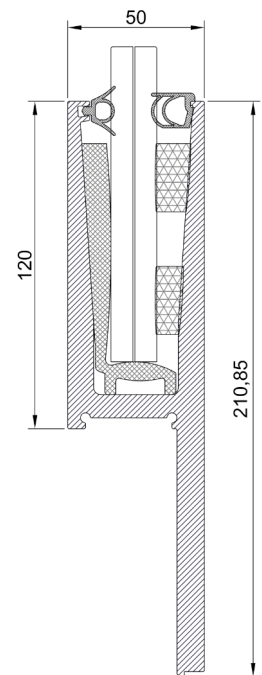
"U" desing



Lateral "U"

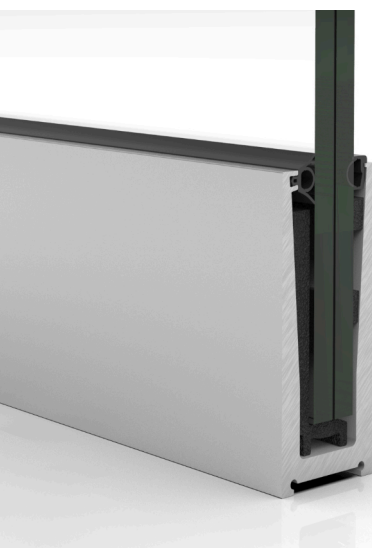


Vertical "U"



| | |
|-----------------|------------------|
| | 88.1 |
| | 88.2 |
| Glazing options | 88.4 |
| | 1010.2 |
| | 1010.4 |
| | 0,8 KN |
| Adequate up to | 1,6 KN |
| | 3,0 KN (consult) |

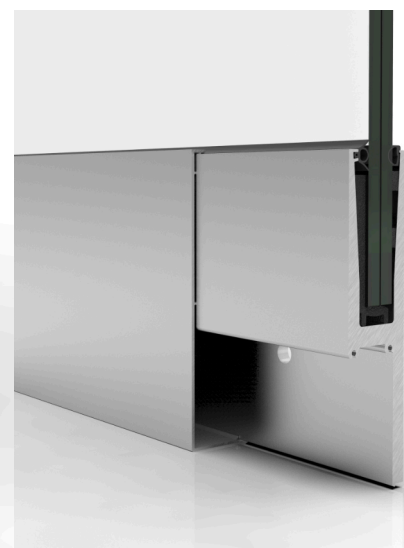
- Supports heavy loads and provides transparency, allowing full visibility.
- Compliance with safety and construction regulations.
- Easy assembly and installation, with safety wedge system.
- Types of fixing: floor, front and side.
- Patented adjustment system.



"U" desing



Lateral "U"



Vertical "U"

