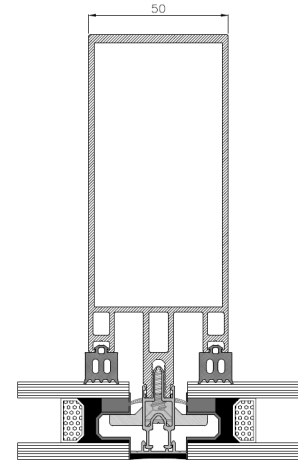
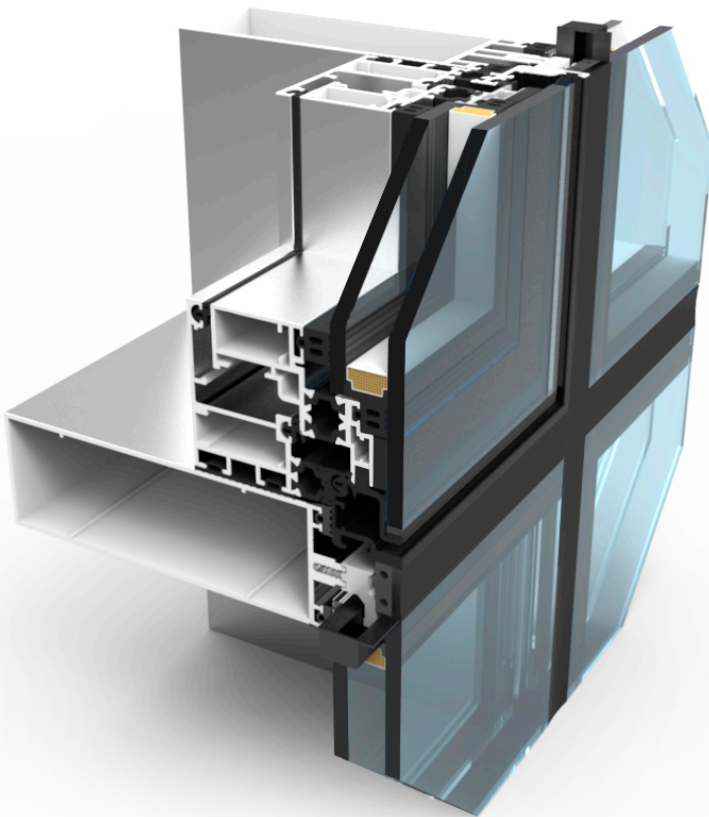


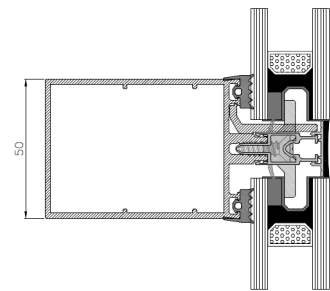
EXAP-50 SG

Lightweight facade – curtain wall

- Uprights and transoms, with a cross-section of 50 mm and widths ranging from 20.8 mm to 275 mm.
- Improved water tightness thanks to the tiered drainage system.
- Possibility of different exterior views: Structural glass.
- Glazing capacity from 6 mm to 54 mm with high thermal insulation.



Upright section



Transom section

Light facade with glass 33.2 – 10 – 44.2

6700x4500	Air permeability	A4
	Water tightness	R7
	Wind resistance	5700 Pa
	Impact test	Apt

Settings

Glazing capacity	6–54 mm
Thin profile view	50 mm
Uf upright	1,82 W/m ² k
Uf transom	1,76 W/m ² k
Uw from	0,8 W/m ² k

